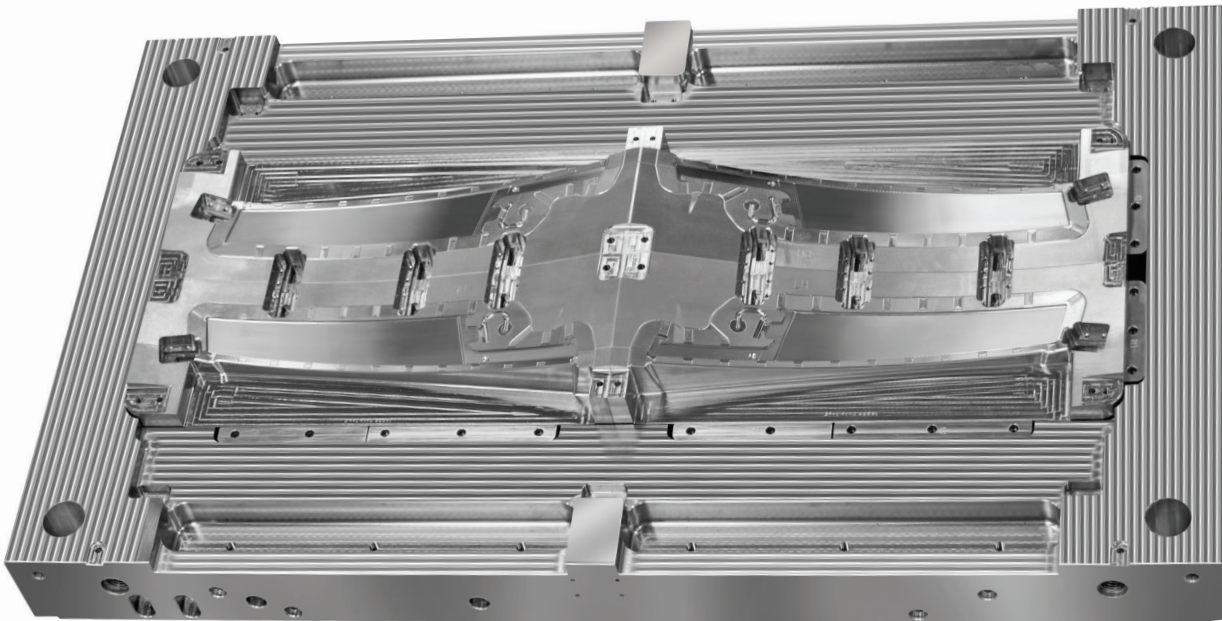


# DME Large Mold Bases for Automotive Applications



## Precision machined mold bases and plates with lengths up to 90"

- Fully machined custom mold bases, plates and frames for injection molds and die casting
- Mold base/plate assembly (bushings, pins, pillars, etc.)
- All finishing operations executed in climate-controlled areas

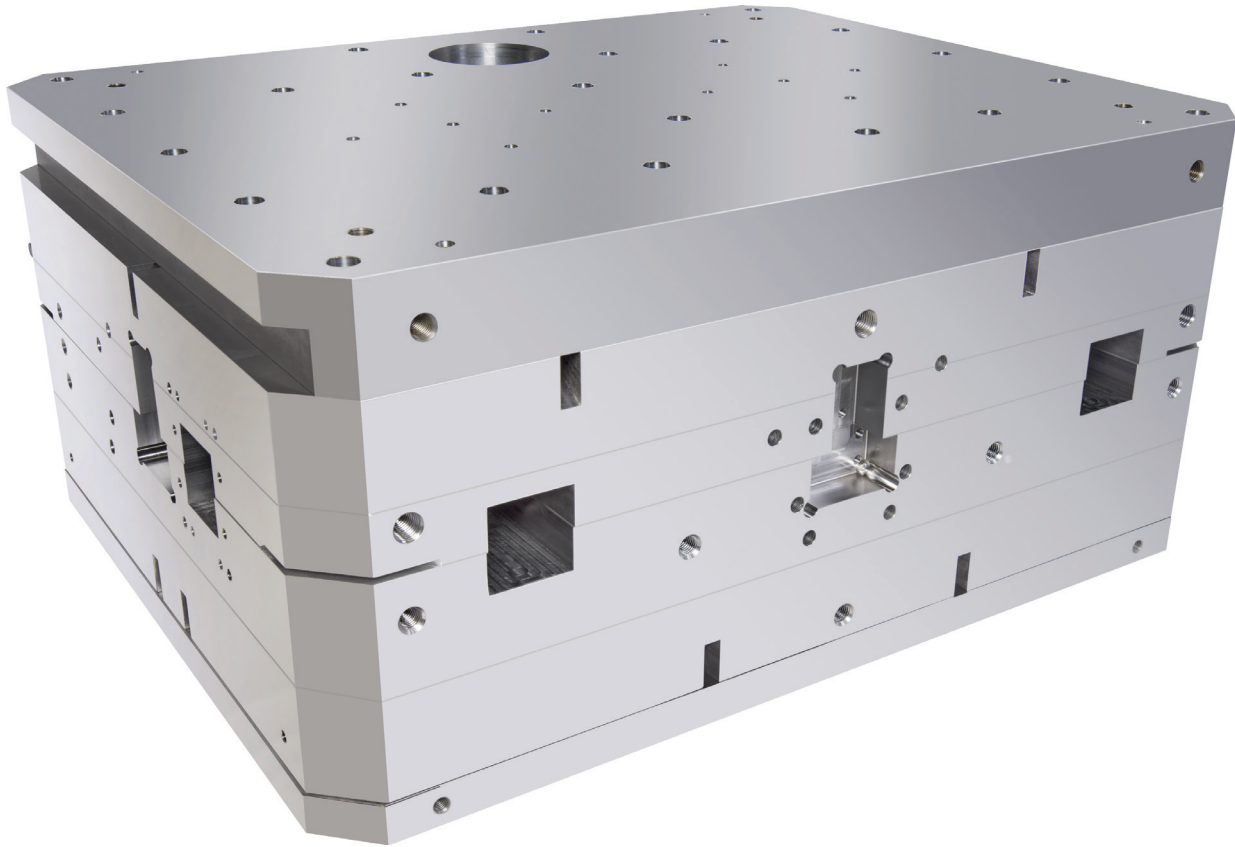


**Proven automotive specialization across multiple applications including automotive, lighting, interiors and under the hood**

### Manufacturing Capabilities

- Plate lengths up to 90" (2300mm)
- Plate widths up to 60" (1500mm)
- Plate thicknesses up to 39" (1000mm)
- Plate weights up to 17,200 lbs. ( 7800kg)
- Proven automotive market specialization

# DME Large Mold Bases for Automotive Applications



## Steel Material Options

- Precise machining of all alloy tool steels
  - DME #7 stainless steel (1.2085)
  - DME #3 P-20 modified steel (1.2312)
  - DME #1 steel (1.1730)
  - DME #5 H-13 hot work die steel (1.2343)
  - DME #2 steel (1.2312)
  - DME #6 stainless steel (1.4028)
  - Uddeholm RoyAlloy™
  - Many other types  
(including customer provided)

## Special Machining Plate Work

- Custom mold bases
- Mold plates, frames and other components
- Clamping plates, stripper plates, cavity plates, etc.
- Hot runner manifold plates
- Parting line plates
- Insulator plates, rails, etc.